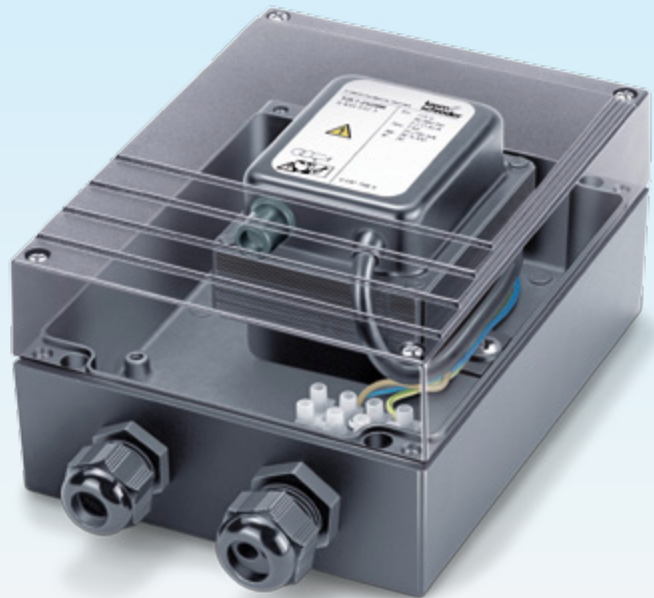


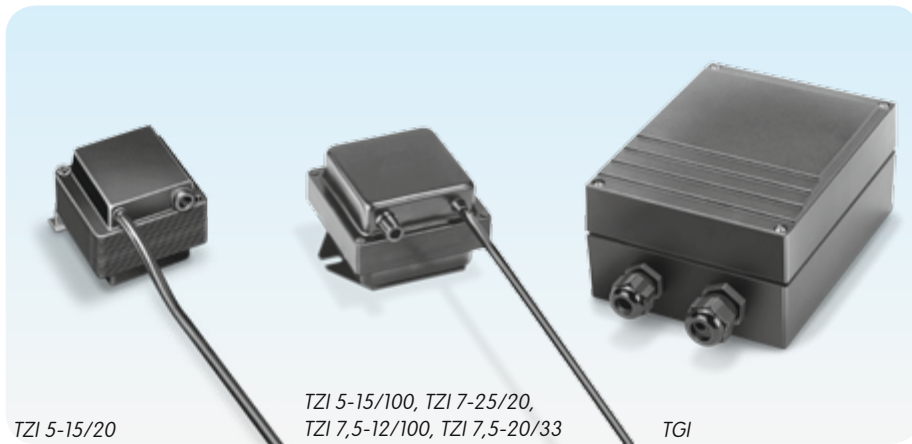
## Ignition transformers TZI, TGI

Product brochure · GB

8 Edition 02.11



- Electrical ignition of gas burners
- Ignition and burner control with a single electrode possible
- For installation in a control cabinet or wall mounting
- Complying with EN 61558-2-3
- TZI 7,5-20/33R complies with CSA

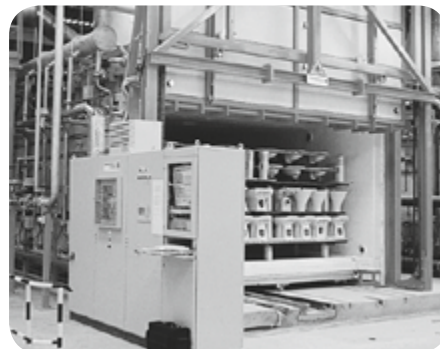


## Application

Ignition transformers TZI and TGI are designed for high-voltage spark ignition of gas burners and gas-ignited or directly ignited oil burners. The ignition transformers can also be used on burners with single-electrode operation; the ignition current and ionization current flow over a common electrode. Ignition transformer TZI fulfils the requirements for enclosure IP 20. It is suitable for installation in a control cabinet. Ignition transformer TGI in its die-cast aluminium housing meets the requirements for enclosure IP 65. It is suitable for on-site mounting near to the burner.



*Bogie hearth forging furnace in the metallurgical industry*

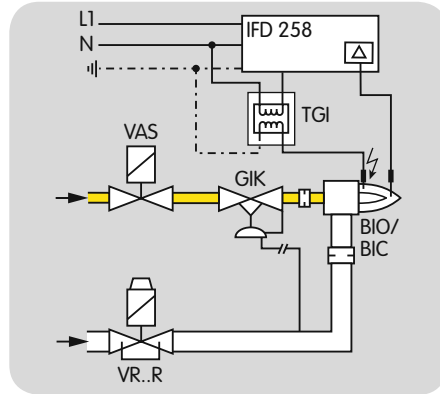


*Intermittent shuttle kiln in the ceramics industry*



*Walking beam furnace with overhead firing*

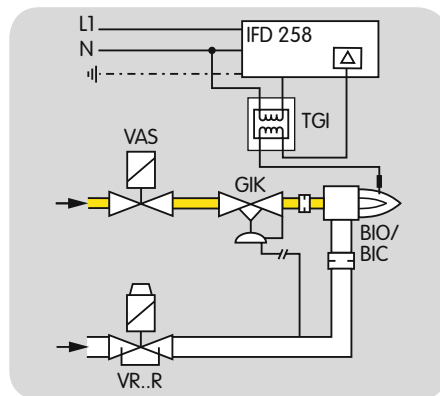
Examples of application



Double-electrode operation

Ignition using ignition electrode

Ignition transformer TGI is supplied with voltage via the automatic burner control unit IFD 258. The ignition transformer generates a high voltage. This high voltage creates ignition sparks between the ignition electrode and burner ground. After the burner start, a current flows via the ionization electrode for flame control.



Single-electrode operation

Ignition using an ignition and ionization electrode

After burner start, a flame control current flows via the same electrode that is also used for ignition.

Type code

Code	Description
TZI	Ignition transformer
TGI	Ignition transformer, enclosed
5	High voltage: 5 kV
7	7 kV
7,5	7.5 kV
-12	Output current: 12 mA at 50 Hz (9 mA at 60 Hz)
-15	15 mA at 50 Hz (11 mA at 60 Hz)
-20	20 mA at 50 Hz (15 mA at 60 Hz)
-25	25 mA at 50 Hz (18 mA at 60 Hz)
/20	Duty cycle: 20%
/33	33%
/100	100%
R	Mains voltage: 115 V
W	230 V

## Technical data

Type	Input			Output			Duty cycle**	Enclosure	Weight kg
	V AC	Hz*	A*	V	mA*				
TZI 5-15/20W	230	50 (60)	0.5 (0.35)	5000	15 (11)		20	IP 20	0.9
TZI 5-15/100W	230	50 (60)	0.45 (0.35)	5000	15 (11)		100	IP 20	1.5
TZI 7-25/20W	230	50 (60)	1.1 (0.8)	7000	25 (18)		20	IP 20	1.5
TZI 7,5-12/100W	230	50 (60)	0.6 (0.45)	7500	12 (9)		100	IP 20	2
TZI 7,5-20/33W	230	50 (60)	0.9 (0.7)	7500	20 (15)		33	IP 20	2
TZI 5-15/20R	115	50 (60)	1 (0.7)	5000	15 (11)		20	IP 20	0.9
TZI 5-15/100R	115	50 (60)	0.9 (0.7)	5000	15 (11)		100	IP 20	1.5
TZI 7-25/20R	115	50 (60)	2.2 (1.6)	7000	25 (18)		20	IP 20	1.5
TZI 7,5-12/100R	115	50 (60)	1.2 (0.9)	7500	12 (9)		100	IP 20	2
TZI 7,5-20/33R	115	50 (60)	1.8 (1.35)	7500	20 (15)		33	IP 20	2
TGI 5-15/100W	230	50 (60)	0.45 (0.35)	5000	15 (11)		100	IP 65	3
TGI 7-25/20W	230	50 (60)	1.1 (0.8)	7000	25 (18)		20	IP 65	3
TGI 7,5-12/100W	230	50 (60)	0.6 (0.45)	7500	12 (9)		100	IP 65	3.5
TGI 7,5-20/33W	230	50 (60)	0.9 (0.7)	7500	20 (15)		33	IP 65	3.5
TGI 5-15/100R	115	50 (60)	0.9 (0.7)	5000	15 (11)		100	IP 65	3
TGI 7-25/20R	115	50 (60)	2.2 (1.6)	7000	25 (18)		20	IP 65	3
TGI 7,5-12/100R	115	50 (60)	1.2 (0.9)	7500	12 (9)		100	IP 65	3.5
TGI 7,5-20/33R	115	50 (60)	1.8 (1.35)	7500	20 (15)		33	IP 65	3.5

\* Values in brackets apply to 60 Hz.

\*\* For temperatures between -20 and +35°C.

Ambient temperature: -20 to +60°C.



### Detailed information on this product



[http://docuthek.kromschroeder.com/doclib/main.php?language=1&folderid=203060&by\\_class=6](http://docuthek.kromschroeder.com/doclib/main.php?language=1&folderid=203060&by_class=6)

### Contact

[www.kromschroeder.com](http://www.kromschroeder.com) → Sales

Elster GmbH  
Postfach 2809 · 49018 Osnabrück  
Strothweg 1 · 49504 Lotte (Büren)  
Germany  
T +49 541 1214-0  
F +49 541 1214-370  
info@kromschroeder.com  
www.kromschroeder.com

We reserve the right to make technical modifications in the interests of progress.  
Copyright © 2013 Elster GmbH  
All rights reserved.